

The Resident

Billericay District Residents' Association



"Help us to help you"



October 2024



**Local Plan Consultation –
Make your views known**

PAGE 2

**Billericay Post Office – Good news
from Cllr Andrew Schrader**

PAGE 4

**BT Digital Voice – Latest
Update**

PAGE 3

**Human Kind – ‘The café that
pays it forward’**

PAGE 4

Your subscription for membership costs £3, which includes 10 editions of The Resident.

Visit the BDRA Website at: www.bdra.org

Billericay Needs You!

BDRA VACANT ROLES

Chair Good Chairs are – Assertive, Decisive, Good Listeners, Adaptable, Diplomatic, Impartial Attentive and Concise.

Do you think you have these skills? Do you care about the future of Billericay? Have you some time to spare?

You sound just like the type of person we are looking for. BDRA now has a vacancy for a Chair.

If you are interested, please contact resident@bdra.org

Road Reps

We are desperately in need of new volunteers to help us distribute and manage our magazine. Can you spare just a few hours a month to help us deliver our magazine to your street?



A Road Representative usually covers the same roads once a month.

Balmoral Close, James Square, Holly Gardens and bottom end of Norsey Road, Headley Road and part of Outwood Common Road and Outwood Common Close

Contact Jan Weir jimandjanweir@gmail.com

Crays View and Langham Crescent

Contact Gordon gordon2908@me.com

Area Membership Secretary for Great Burstead & South Green

Membership Secretaries look after their particular area. The role will normally take a few hours a month and would suit anyone looking to give something back to the community. Use of email would be an advantage. Interested?

Contact resident@bdra.org

Thank You...

...to Joan Shoush who delivered to Outwood Common Road and Outwood Common Close.

We would like to say a thank you to Karen Sinclair, who has volunteered to write some articles for The Resident. Her first article is published in this edition, which I am sure you will agree is an excellent article on the Human Kind Café.



REMINDER...

We can now offer an e-version of The Resident. If you opt to receive the e-version you will be required to pay your subs by bank transfer. If you would prefer to receive The Resident in this format, please email resident@bdra.org

If you receive a hard copy of The Resident and would prefer to pay your subs by bank transfer, please email resident@bdra.org and request the bank details you will require.

Notice Boards

If you are a regular user of our Notice Boards in the town, we have a new co-ordinator in this role. Please do not deliver posters to Lynne Beard as previously, please contact resident@bdra.org, when you will be supplied with details of the new co-ordinator.

BDRA NEWS

LOCAL PLAN

Soon after you receive this edition of The Resident, Basildon Council is expected to publish the first draft of the new Local Plan. It will be a plan showing where housing and other development will take place in the borough over the next 20 years.

At the time of going to press no details had been made public other than the expectation that the new plan will be based on the Government's housing target of just over 27,000 houses of that number that more than 16,000 will require the Green Belt to be released.

That scale of development would see the number dwellings in the borough increase by over 30% in just 20 years, with a similar increase in population and the number of cars on our roads.

Looked at another way, 27,000 new houses are more than the current numbers in Billericay and Wickford combined! That is a very scary thought considering that it's taken hundreds of years for the borough and its towns to reach their current size.

Furthermore, this scale of development will put huge pressure on our existing services, such as health facilities and schools, and our transport infrastructure; all of which are stretched today.

Quite simply, the sheer scale of expansion being planned is unnecessary and unsustainable within our existing communities and environments.

There is no denying that we urgently need a new Local Plan and that new housing for local people is essential. However, it needs to be based on the true local need, not a top-down Government edict, provide the right types of houses to meet that need, and build them in places where they are most needed and where they are sustainable.

The inevitable expensive housing estates in the countryside will not address the real need. Many people will still not be able to afford a home of their own regardless of how many are built.

If you are concerned about the future of Billericay, and the borough, please engage in the public consultation on the draft Local Plan and make your views known. The consultation is due to start in November.

We will aim to provide more information in the next edition of this newsletter but also keep an eye on the BAG website (www.billericayactiongroup.org.uk) or follow them on Facebook by searching for 'Save Billericay From Housing Developments' and joining their page.

At the end of the day it is down to all of us to be involved and help to steer a good outcome in the new Local Plan.



Digital Voice... ...An Update

(Whilst this article refers primarily to BT the general points are applicable to other landline operators.)

As described in the February Resident all landline voice telephone services in the UK are to transfer to an Internet based service. It is already happening in other parts of the world. Although the UK deadline has now been delayed until 2027 most operators will want to have the vast majority of their customers transferred well before then.

Most current landline users will find the transfer uneventful, but for some, especially those with additional services which rely on the current voice network such as personal alarms and burglar alarms, there will be issues which need to be addressed in advance. And there remain unresolved concerns about access to the Emergency Services once the replacement landlines are dependant upon the householders' public mains power supply.

Whilst the changeover is claimed to be an industry wide, long-term initiative, there is little real evidence of co-operation. As an example it is believed that some burglar alarm suppliers are already prepared and are offering free upgrades whilst others are charging around £800 for the necessary changes. And despite BT claiming that vulnerable customers are one of its priorities, whilst this article was being prepared it was mis-informing one of our over-80 year old residents about a forthcoming change of contract which appears to be at variance with what it claims to be are its own processes. In a change to previously announced conditions BT now seems only to recognise over-75 year olds with a Telecare Alarm as a special case.

The good news is that our new MP, Richard Holden, is taking a personal interest in the situation and has already taken action, including seeking a meeting with BT.

At the time of writing Billericay is not identified in the next 3 months transfers but that should not prompt complacency. Anyone with additional equipment which uses the current analogue network, such as Telecare Alarms and some burglar alarms, should seek guidance from their supplier about the implications of Digital Voice, how they will be addressed and at what cost when the time comes.

Residents with concerns, including anyone targeted by their current telecoms supplier but with outstanding issues, is recommended to contact Richard Holden.

As with many utility providers BT operates a Priority service for some customers and residents are encouraged to explore whether this might offer advantages now and when the time comes for transfer to Digital Voice. Its full name is the BT Free Priority Fault Repair Service.

Letters to the Editor...

Dear Resident,

LEIDEN'S CONNEXION TO THE MAYFLOWER

Having just returned from Holland, I thought I'd highlight a fascinating visit to one of its Mayflower-related sights: the Leiden American Pilgrim Museum in Beschuitsteeg. Half the Pilgrim Fathers were English exiles living in Leiden and the tiny 14th-century museum, preserved as it was in the year 1620 and full of contemporary artefacts, shows the everyday life of the Pilgrims. Excellent personal tours (i.e. just my wife and I) in English can be booked with the curator at <https://leidenamericanpilgrimuseum.org/en> (the website has a short video showing the interior). Next door the tour continues in a house as it was in the 1380, again, and unbelievably, full of contemporary artefacts. Leiden has several 'Pilgrim' connexions and many attractions but this particular museum, given the Mayflower's link with Billericay, is well worth the visit.

Julian Whybra



New cash Machine in the High Street

Did you know there was a new cash machine in the Iceland store in the High Street? It is free for all to use. Thank you to Iceland for providing this much needed community amenity.

**CRYSTAL
PRINT co UK**

**Building Plans
Colour while u-wait**

**Colour Copying
from 9p (based on 1000)**

Van Graphics



**E: sales@crystalprint.co.uk
W: www.crystalprint.co.uk
22 Western Rd, Billericay CM12 9DZ**

**PRINTING
SIGNAGE
WORKWEAR**

**01277
650661**

The Billericay Theatre

Fancy a night at the theatre but without the West End prices and expense of a train? Did you know we have a theatre right on our doorstep in Billericay? I know you are picturing a run-down hall with fraying curtains and uncomfortable chairs but The Billericay theatre is a state of the art, modern venue with seating for 100 people.

Previously a craft beer warehouse, it was taken over in 2019 with a view to converting the ample space into a performing arts school. This currently runs on a Saturday and includes musical theatre, ballet, modern, tap and street dance classes. The space can also be hired out for private functions and business conferences with a variety of packages.

There is a wide variety of events running every month including theme nights, cocktail nights, cheese & wine nights, Sunday soirees and a general knowledge quiz night on the last Thursday of every month. Some of the theme nights includes Elvis, Fleetwood Mac, Madness, Beyonce and Freddie Mercury.

I can personally vouch for the theme nights as I attended a Grease Lightning night last year, we all dressed up as pink ladies and had a singalong & quiz which of course we won! We had a waitress service and lots of

Woo Woo cocktails were consumed! The tickets were only £24 and it was fun night out!

If you wanted to pop in for a coffee or a snack the Stagecoach café is open from Monday – Friday 10am to 3pm.

Prices start at £24 for a tribute show, £12 for a Sunday soiree, £21 for a cocktail night and only £5 for the quiz night. From Sunday 1st to Tuesday 31st December the pantomime Rapunzel is running with tickets from only £26 (Adult) £20 (under 15). With prices like that it's well worth a visit! Oh no it isn't, oh yes it is!

For more information and to book tickets please go to the website:

boxoffice@thebillericaytheatre.co.uk or contact them on **01277-655861**. You can find the Billericay theatre at 34 Radford Way, Billericay, Essex, CM12 0DX.

Written by Angela Chapman

16:29

4G

facebook.com

The Billericay Discussio ...



Cllr Andrew Schrader - Billericay East

6h · 🌐

NEW POST OFFICE

I am finally able to confirm that the new Billericay High Street Post Office will be moving from its current location at the One Stop (93-95 High Street) to the old Coleby's Jewellers at 103c High Street. I know a lot of you had guessed that already, or heard it on the grapevine, but now I'm officially able to confirm it. 👍

I am, of course, delighted that we got there in the end and that the future of this service has been secured.

Many thanks, again, to my colleagues Cllr. Andrew Baggott and [Cllr Anthony Hedley](#), Town Cllr. Jim Devlin of Billericay Town Council, our former MP, John Baron, Jim Sims at Basildon Council, and the folks at Post Office Ltd. It has been a massive collaborative effort to save Billericay Post Office.

The Post Office are required to run a consultation about the move, which I would encourage residents to respond to. I look forward to seeing the new Billericay Post Office officially opened. 🍾

Human Kind – ‘The café that pays it forward’

A new café in the high street which makes your soul and your tummy that little bit warmer! You've guessed it I'm talking about the Human kind community café, which has recently opened its doors in the former Lloyds Pharmacy building on Billericay High Street. The charity Human Kind, brainchild of local businessman Ram Goyal aims to break down barriers by fostering a sense of community and helping to combat social isolation and it certainly does that!

Run by the community, for the community this café is beautifully designed as a welcoming space for the community to come together whether that be to just sit and delight in their delicious plant based meals and snacks, (I'm rather partial to their Mixed Pepper and Halloumi Salad) or to interact and join one of their events aimed at connecting like-minded people such as Sunday afternoon socials and wellness events, or support groups run by local organisations covering topics such as Dementia, Menopause to name a few. If you are lucky, you may even hear a children's story session running in the cafe whereby a qualified early years professional, Gail, reads a classic children's story, followed by a craft session linked to the book!

The charity believe they can "...change the world one kind act a time" and one way they do this is by operating a "pay it forward"

policy, when you order food, you pay what you want or pay more so the next persons' food is free!

The café employs a number of permanent staff and a team of volunteers also support the venture. The volunteers come from all sorts of backgrounds and most are looking to give something back to the community. Sue who volunteers at the café said "The Human Kind Café feels like a good safe home should feel and I volunteer my time here to do something or say something that brightens someone's day, that is enough!"

Pratibha who also volunteers stated that she loves volunteering "because it embodies the concept of seva (selfless service)" which she was taught from a young age. She stated that it also "brings immense pleasure to meet new people and continuously learn from them... in the process of helping others,



I end up benefiting... more than the people I assist."

If Sue and Pratibha have inspired you and you feel you would like to volunteer, Human Kind are always on the lookout for people who are happy to spare some time to greet and talk to customers, and give a helping hand at busy times. Humankind

is very flexible with shifts and the volunteers feel part of an amazing team, so if you would like to help out, please contact them at volunteer@humankindcafe.co.uk. You can also contact and find out more on their facebook page Human Kind.

By Karen Sinclair





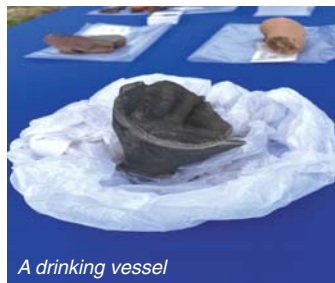
Archaeological Dig at Kennel Lane

In July an archaeological open day was held at the site off Kennel Lane where 179 houses are due to be built.

The archaeological survey was a condition of the planning permission and has shown that the area was inhabited in the Roman period and no doubt earlier. There have been many finds including boundary ditches, kilns and items of pottery and metal work. The survey will continue through the summer and will be fully documented before construction work begins. Billericay clearly has a rich and long history.



Boundary ditch excavation



A drinking vessel

The George Hurd Activity Centre

Over 50's Activity Centre based in Basildon
Open Monday to Friday
10.00am – 4.00pm

We offer a range of over 25 classes, from Art to Bowls, Keep-fit to Sit-Down Yoga, Card Making to Ballroom.

We also have a warm and welcoming lounge and Tea Bar area, so you can enjoy activity as well as socialising.

- Classes £2.50 - £3.50
- First class is free of charge
- Monthly trips are on offer and we have regular social gatherings here at the centre
- Membership £4 per month + annual £4 committee fee
- Members only
- On site Car park
- Hairdresser



Audley Way · Basildon · SS142FL
Telephone: 01268 205305/6

BILLERICAY COMMUNITY CINEMA



See How they Run

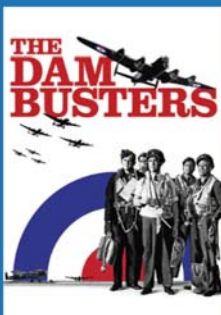
Sunday 20th October (2022, 12A)

Tickets £4.00 from Billericaycine.com

Doors open 2:30pm, film 3pm

A cuppa, home made cake,
a natter & a film
That's Sunday Matinee

SUNDAY MATINEE



The Dam Busters

Thursday 7th November (1955, U)

Tickets £5.00 from Billericaycine.com

Doors open 7pm, film 7:30pm

Wine, Billericay Brewery beers,
cocktail, mocktail, tea/coffee,snacks

FILM THURSDAY



WHERE TO FIND US

The Chantry Centre - between Ravens and The Chequers

BILLERICAYCINE.COM

F. E. FARRER

FUNERAL DIRECTORS & MONUMENTAL MASONS
5th Generation Family Owned Since 1860

Private Chapels of Rest
Home Visits Arranged
Pre Paid Funeral Plans



Memorial Headstones, Additional Inscriptions and Renovations
Rolls Royce & Daimler Fleet - Horse Drawn Carriages
Green Funerals & Woodland Burials

33 High Street
Billericay
01277 622944

246 Hutton Road
Shenfield
01277 216030

For Immediate Personal Attention, Day and Night
www.fcfarrer.co.uk



FLOURISHING FLOWERS

Janet Hibberd
Floral Designer
Specialising in funeral tributes
01277 650276
FlourishingFlowers.co.uk



On Sunday September 1st, the statue of the Child in the Park was stolen from Lake Meadows. We have heard of children and elderly people in tears over its loss!

The statue was commissioned in 2000 by Billericay Early Years Forum to commemorate the millennium. Many, many people in Billericay contributed to the cost and were involved in its design and production, and since it was installed, hundreds, if not thousands, of children, young people, their parents and members of our community have come to love the figure.

Judging by the number of Facebook messages, there has been a huge response to the theft, many asking just what is the matter with the people who have done this and why would they take it? Suggestions have been made about locking the park or adding more CCTV units – both of which would be a costly outlay but which actually would not deter these thieves from finding a way in if they were determined.

Created by Essex sculptor John Doubleday, the statue was made of bronze and depicted the figure of a crouching child, which could be interpreted as a boy or a girl, and of any race, with a snail in its hand. Around the base were 18 small creatures, including a butterfly, wren, spider, frog and many others. The statue was given "to the children of the future, from the children of the past and present", in the hope that it would be a lasting inspiration.

On Valentine's Day 2017, the statue was stolen, but luckily turned up, almost undamaged, about three months later in a garden in Brentwood. It was left on a small trolley and presumably had proved just too hot to handle. It was duly repaired and returned to its rightful place with even stronger fixings and marked with a special product, which means if found its ownership can be quickly identified.

Now it has been stolen again by cowardly



thieves who think of nothing but lining their own pockets. They probably do not realise that, as scrap, the bronze is worth very little – maybe £100, if they are lucky. However, every scrapyard in the country has been notified of the theft and no scrap dealer will risk handling stolen goods. It has also been widely reported in local newspapers and on Radio Essex.

We hope that the thieves can be persuaded to leave the statue somewhere safe, where it can be found and returned home where it belongs. A number of residents have already passed information onto the police, including access to security camera footage. Two men were reported to have been in the park behaving suspiciously that night. Someone somewhere must know who stole it; someone will have boasted about their ill-gotten trophy.

If you saw something suspicious on September 1st or have any information, please let the police know by calling 101; ringing Basildon Council or emailing us.

We need our statue back!

Do you have a neurological condition or provide support for someone who does?

Share your experiences to help improve services for everyone affected by neurological conditions.



Scan the QR code below or use this link to complete the short survey online:

<https://revealingreality.welcomesyourfeedback.net/a84vvg>



Complete the survey online or:

Email info@neural.org.uk to request a paper copy

Call +44 (0)20 7735 8040* to complete the survey over the phone in English or another language.

*standard network rates apply.

Survey open from 22 July 2024 to 15 November 2024



REVEALING REALITY

The Neurological Alliance

One in six people live with neurological condition, ranging from a stroke, MS, MND, headaches, brain tumours or injury, dementia, Alzheimer's or Parkinson's Disease. People with any of these conditions across the UK and Ireland are being asked to take part in the largest neurological survey to help improve vital services and support.

The Neurological Alliance – the leading coalition of over 90 charities working to transform quality of life for people with neurological conditions is running the survey to gain invaluable insights into care, treatment and support across the country. This year the survey is not only looking at the experiences of adults and children affected by neurological conditions, but their informal carers as well.

So, please encourage everyone who has contact with anyone with a neurological condition to share their experiences and celebrate excellent care or highlight areas for improvement.

Blasted Memories



Slate house signs made to measure.

Personalised glass engraved gifts for all occasions.

Contact Colin who will be happy to help you



01277 655613 / 07749 710489

www.blastedmemories.com [Facebook.com/blastedmemories1](https://www.facebook.com/blastedmemories1)

Your lasting legacy.

Leaving a gift in your Will to St. Luke's Hospice – even just a small percentage of your estate – is one of the most valuable and lasting ways you can support our caring work.

St. Luke's Hospice is an innovator in the delivery of palliative and end of life care. Your lasting legacy will help us to continue to provide relevant and much needed services for local people with life limiting illnesses, and their families.

Contact our Legacies team for a free information pack today:

Call: 01268 524973

Email: legacies@stlukeshospice.co.uk

Visit: www.stlukeshospice.com/legacies

St Luke's Hospice (Basildon & District) Ltd. | A Company Limited by Guarantee No. 1812104 | Registered office: St. Luke's Hospice, Fobbing Farm, Nethermayne, Basildon SS16 5NJ | Registered Charity Number 289466

St. Luke's
Hospice



The Importance of Lasting Powers of Attorney for Retirees

If you're retired, it's essential to ensure your finances, health, and welfare are legally protected. Many mistakenly believe that if they lose mental capacity due to dementia, an accident, a stroke, etc., their family can automatically take charge. However, without legal authority, no one can access your financial assets or make decisions regarding your healthcare.

In practice, this means your bills may go unpaid, and crucial medical decisions could be left in the hands of doctors rather than loved ones. To avoid this, it's important to establish Lasting Powers of Attorney (LPA). An LPA allows you to appoint trusted individuals to act on your behalf, ensuring your wishes are followed if you're unable to make decisions yourself.

There are two types of LPAs: one for property and financial affairs and another for health and welfare. A property and financial LPA enables your attorney to manage your finances, from paying bills to selling property, even before mental capacity is lost. A health and welfare LPA gives your attorney authority to make decisions about your medical treatments, daily care, and living arrangements, but only if you lose mental capacity.



Without LPAs in place, someone would need to apply to the Court of Protection to gain control, a lengthy and costly process. Worse, the court may appoint someone you wouldn't have chosen. With an LPA, you decide who has this responsibility, ensuring that trusted individuals can step in immediately, avoiding stress and delays.

Setting up LPAs provides peace of mind, knowing your affairs are in order and your loved ones won't face legal hurdles during difficult times. It's a simple, cost-effective step that guarantees your wishes are followed if the unexpected happens. Proactively creating LPAs protects both you and your family.

Emma Clarke
0330 818 2957
emma.clarke@birkettlong.co.uk

it's not just about knowing the law,
it's also about the impact we have on businesses and our communities

FOR EXPERT LEGAL ADVICE
PLEASE CONTACT
ENQUIRY@BIRKETTLONG.CO.UK
BIRKETTLONG.CO.UK
01268 244144

Basildon
Chelmsford
Colchester

www.birkettlong.co.uk



hereforgood

Authorised and regulated by the Solicitors Regulation Authority No. 488404



**MILLER
DECORATING**

- Dustless Sanding
- Spraying
- Wallpaper Hanging
- Interior & Exterior Decorating
- Residential & Commercial

07930 603915
dave@millerdecorating.info
[millerdecorating](https://www.instagram.com/millerdecorating)

Computer repairs & IT Support

Home and Business computer repairs and IT Support
Professional Microsoft Certified Technician
13 years of experience providing IT solutions

Call Andrew on **07590 057809** or **01277 523456**
andrew@a1pcservices.co.uk




BILLERICAY STRIDERS 10K ROAD RACE 2024

NOTICE TO RESIDENTS

t's time to remind everyone about Billericay Striders' ever-popular 10K road race in 2024, which this year will be held on Sunday 3rd November.

After making the difficult decision to cancel last year due to the flooding at the ford, we are hoping for better weather this year, and a heads up that we are going to be running the race on 6th July in 2025.

The race will start at 9.45am at Hannakins Farm Community Centre and finish at Brightside School. As in previous years, Residents in the vicinity of Hannakins Farm Community Centre are asked for their forbearance as additional parking is expected in streets close to the Community Centre. However, runners have been

advised to park respectfully and should not cause any inconvenience to local residents



in the area. This year we hope to be providing additional spill-over parking as in previous years.

Other roads which will be affected by the race will be: Maplebrook Mews, Upland Road, Rosebay Avenue, Queens Park Avenue, Stock Road, Ingatestone Road and Mountnessing Road. Please be patient during the race – there will be marshals along the route to assist traffic and ensure the safety of the runners. The race is run with the available help from the Police and the Council have been advised.

The race is largest sporting

event in Billericay and is contested by Essex elite athletes, fun runners and first timers – all are welcome. As mentioned, the race is already sold out, but please keep an eye on our "Billericay Striders 10K" Facebook page as occasionally people are often looking for others to swap with.

If you have any queries, please email the 10K committee on **10k@billericaystriders.com**.

If you have already entered, good luck and enjoy the race!

Once again, the club thanks local residents for their patience during this ever-popular event.

self Stable Storage

Moving home • De-clutter
DIY • Small Businesses
Retiring • Bereavements
Garden Equipment • Renting

HOW MUCH DOES IT COST?
We have rooms ranging from 10 to 300sqft and prices start as little as £5 a week

DO I HAVE TO SIGN A LEASE?
No. You sign a straightforward storage licence agreement prior to moving into your unit.

• 5 minutes from the highstreet
• Unlimited access during our extensive opening hours
• Ample parking and drive-up access
• Access 365 days a year
• No long term commitments
• Your own padlock, only you hold the key
• Unique security pass - code
• 24hr CCTV cameras

MAN AND VAN AVAILABLE

- Collections & Deliveries
- 1 Tonne Hi-Ab
- 12m Cherry Picker

01277 658001 www.stableselfstorage.com
Elmshaws Farm, Tye Common Road, Billericay, CM12 9SB

SHARP'S DECORATING

Interior decorating

Paper stripping, Paper hanging,
Painting

References and
Portfolio Upon Request

Trading since 1988

Call for Free estimates
and advice

Robert Sharp
01245 259245 or 07979 400357

City Guilds Qualified

Mark Hatch IOC
CARPENTER & JOINER

Architraves, Skirting, Internal, External Doors & Frames, Garden Gates, Stairs Spindles, Handrails, Built-in Cupboards, Bookcases & Shelving, Study & Bedroom Furniture, Wood Flooring, Staining & Polishing, Furniture Restoration.

01277 625908 07956 444483
www.markhatch.co.uk

A J Turner

Paving Specialist

Brick drives • Tarmacadam
Pattern imprinted concrete drives • Patios
Turfing • Brick work • Fencing

For all your outside work call Jay on
01277 375901 or 07887 523455
Paving@ajturnerbuilders.co.uk
WWW.ajturnerbuilders.co.uk

S&D BANKS LTD

Plumbing & Heating

Free Quotations



- Full Central Heating
- Toilets / Sinks & Taps
- Power Flushing
- Pressurised Hot Water
- Bathroom / Shower / Tiling
- Water Heaters / Cookers / Gas Fires
- Electrical Maintenance
- Replacement Boilers
- Landlord Certificates
- Radiators / Pipes / Overflow
- Blocked Drains / Leaks
- Solar Hot Water Installations
- L.P.G., Natural Gas, Oil
- Underfloor Heating

(All work guaranteed – fully insured)

- ★ Landlord Gas Safety Certificate £65.00 + VAT
- ★ Boiler Service from £65.00 + VAT
- ★ Power Flushing from £285.00 + VAT
- ★ Free energy efficiency consultations available on request
- ★ Installer of Air Source Heat Pumps



Billericay 630236 Mobile: 07742 505011/07805 935912 email: sdbanksplumbing@gmail.com www.sdbanksplumbing.com

25 years in the trade

TLC Bathrooms

Full bathroom installations · Plumbing · Wall & Floor Tiling
Electrics · General Maintenance · Silicone sealants

Call us today for a FREE quote!

Steve Reader – based in Billericay

steveread@aol.com www.tlcbathrooms.co.uk

01277 626219 or 07765 400860

www.foxpath.co.uk

F.A.Ingram

Carpentry & Joinery

Fine interiors & bespoke joinery

Advanced City & Guilds qualified
From skirting to loft conversions
Kitchens, cabinets, bathrooms etc

07962 172658
or 01245 600428

MSM Electrical

Looking after all your electrical needs since 1986

We offer:

- Free estimates
- Professional, reliable, and friendly service
- Fault finding
- Extra lighting and power points
- Fully insured

Call Mick on

01277 650839 / 07968 641897 or

Email: msmelec@hotmail.co.uk

CARPET & UPHOLSTERY CLEANING

Ring Steve on 01277 654608 or 07836 337093



Austin Jones Group – Est. Since 1989
www.austinjonesgroup.co.uk



BILLERICAY TOWN FOOTBALL CLUB

Support Your Local Football Club

Dates for your Diary!



Town Council Meetings

- **Billericay Town Council Meetings** Planning, **1st October, 15th October, 15th October, 29th October**; Finance and General Purposes, **17th October**; Health, Wellbeing and Environment **8th October** Town Council **24th October**.



Clubs and Societies

- **Anna's Place For Older Adults** Dementia friendly. Crafts, puzzles, games, music, singing, lunch and refreshments 10.30am - 2pm **every Tuesday**, Christ Church Hall, Perry Street, Billericay. For more information phone 01277 630144
- **Basildon and Billericay French Circle** meet at The Fold, Laindon Road **Friday 18th October** at 8pm, "Quelques-uns des plus beaux villages en France", a talk in French by Brigitte Whiteing; **Friday 1st November** "Debussy, Mallarmé et Baudelaire", a talk in French with musical illustrations by Emilie Capulet, a pianist of international repute. All welcome, visitors £5. www.basildonandbillericayfrenchcircle.com or contact 07986 293419
- **Basildon Mind** A local Charity focusing on helping people with their mental health. We hold pop-ups at the Humankind Café and Billericay Library. Contacts: 01268 289700, john@basmind.org
- **Billericay Archaeological and Historical Society** meet at The Fold, Laindon Road, **Monday October 14th** '1066' with Julian Whybra. Non-Members £2, Raffle £1, refreshments £1 per person. Contact alantaylor8@btopenworld.com
- **Billericay Art Club at The Fold Thursdays** 9.30-12.30 New members wanted to join small group of friendly, encouraging amateur painters at The Fold Refreshments and free parking available. Call Eileen on 01277 659347 for more information
- **Billericay Choral Society** Come and Sing, **Tuesdays** at 7.30pm at Methodist Church, Western Road, Billericay. For more information contact www.billericaychoral.co.uk
- **Billericay Community Archive History Fair** **12th October** at Billericay Library 10am-3pm. Displays and talks about Local History. Free entry; Quiz Night, raising funds for the spire of Great Burstead Church. **Saturday 19th October** 7.30pm at Church Hall Great Burstead. Tickets Adults £6, 7-14 years £4, Under 7 years free. Cash only event. Teams of up to 8. Bring your own nibbles and drinks. For tickets phone 07802 154677. Disabled access available
- **Billericay Flower Arranging Group** meet on the **first Wednesday of each month** at 7.30pm for 8pm start in the W.I. Hall, St. Edith's Lane, Billericay. Visitors welcome at £7 each. Contact Linda Gilbey on 01277 656217 or email lgilbey@oal.com
- **Billericay Horticultural Society** meet at the Chantry Centre from 8pm-10pm, visitors welcome £3.00. Refreshments available. **October 21st** A Fascination with Ferns Julian Reed 43trouble@gmail.com
- **Billericay Lions Club** meet in The Duchess Suite at The Duke's Head PH on the **second and fourth Mondays every month** 8-10pm. If you would like to make new friends, whilst helping those less fortunate than yourself, please get in touch 0345 833 9849. For more information www.billericaylions.com
- **Billericay Men's Shed** Generally **fortnightly** – **Mondays** – Coffee n chat, **Tuesdays** – Woodworking, **Wednesdays** – Volunteer supported sessions for those with dementia and their carers. Lake Meadows to the front of the bowls building, just beyond the bowling green. Contact billericaymensshed@gmail.com or phone 07544 752686
- **Billericay Branch of The Mother's Union** meet on **4th Wednesday each month** at 1pm for 1.30pm start in the Mayflower/Pilgrim Rooms of The Emmanuel Archer Hall 66-68 Laindon Road, Billericay CM12 9LD. We have a variety of Speakers and activities, Contact Pauline 07939102945
- **Billericay and District Parkinsons Support Group** We have **every Monday and Tuesday** at 11.30am at Studio360 our exercise classes; **every other Tuesday** Let's Sing Group meet at 2pm in Christchurch, Wickford, our Walk and Talk Group meet **every Thursday** at 11am at main entrance of Lake Meadows to walk a loop or two and tea at the end; Monthly meeting on **3rd Saturday of each month** at Emmanuel Hall at 2.30pm.
- **Billericay WEA** Courses at The Reading Rooms, High Street Billericay CM12 9AS Learning Circle Course - Power and Yachting with Andy Beharrel, **Wednesday 23rd October** 2-4pm. Donations please to cover costs Enrol by contacting Billericay.branch@wea.ac
- **Carers Peer Support Group** Meet at 2pm in Education Room of Billericay Medical Centre on **last Monday of the month**. To book: Contact Jenny. Goodson@carersfirst.org.uk
- **Gone Too Soon** Bereavement support group for Parents who have lost a Son or Daughter in any circumstances and if recent or a while ago. Meet at The Chantry Centre, Chantry Way **Monday 14th October**. Parents are given a warm and friendly welcome in a safe environment. Contact Lyn on 07387805406 or e-mail lyn-currie@hotmail.co.uk www.gone-too-soon.online
- **Hearing Help Essex** – Hearing Aid Support Session. **Monthly** maintenance sessions for NHS hearing aid users at The Chantry Centre. To book an appointment call 01245 496347, text 07950 406173 or book online at www.hearinghelpessex.org.uk
- **Norsey Wood Society** Our next illustrated talk will be held at 7.45pm on **Monday 21st October** in The Fold, Laindon Common Rd CM12 9LD. (Car park behind the former Reids) Bill Godsafe, Warden of Hanningfield Nature Reserve will present 'Trees, Woodlands and Rewilding'. Everyone welcome to this free event. Visit norseywoodsociety.uk or mail norseywoodsociety@gmail.com if more details required.
- **Offshoots Singing Group** meet on **1st and 3rd Wednesday of each month** at St Johns Church, Outwood Common Rd CM11 2LE from 7.45-9.45pm. No auditions. Parking on site. Contact geoffrudd47@gmail.com or phone 07763424206
- **Photofold Camera Club** meet at The Chantry Centre, Chantry Way on **Tuesdays** 8-10pm, doors open at 7.30pm. Info at www.photofold.org.uk
- **Probus Retired Men's Club** Join other retired professional and businessmen at our **monthly** lunch, usually with a Speaker. Contact Steve on 07817 694980 or stevejk88@outlook.com for more details.
- **Probus Club of Billericay and Shenfield** welcomes retired gentlemen members to our 3-course lunch meetings, which includes a guest Speaker at Mount Avenue Banqueting Suite, Hutton **on the last Thursday of every month**. Please contact ianmarshall112@gmail.com for more information.
- **Billericay Ladies Probus Club** If you are retired and would like to make new friends, join us for a **monthly** lunch, chat and speaker. Contact stephanie4probus@gmail.com for more details.
- **Remus Horse Sanctuary** **13th October** Wellness Fair. At Stock Village Hall 11am-4pm. Donations at door in lieu of a ticket price. Range of stalls selling holistic and wellness products. Light refreshments available; **27th October** Online Auction via Remus Facebook Page. Starts 11am; **27th October** Curry Lunch at Nirvana Indian Restaurant, Ingatestone. £20 per person. 2pm for 2.15pm start. Booking essential; **3rd November** Virtual Open Day via Remus Facebook page. 11am-1pm Contact <https://www.remussanctuary.org/events>.

- **Royal British Legion Billericay Branch** meets on **last Wednesday of the month** at 8pm in the Chantry Centre. You don't have to have served in the Forces to join or help. Contact Derek on 07757 313688, derekgprior@hotmail.com
- **Spike's Place Jazz Club** Bardswell Social Club, Weald Rd, Brentwood CM14 4TJ 8pm start. Phone 01245 420475. www.spikesplace.co.uk. Prices on website, Fully accessible. **Tuesday 1st October** Mark Crooks, Colin Oxley, Simon Thorpe, Matt Skelton; **8th October** Richard Pite, Chris Parish, Lorenzo Evans, Harry Evans; **15th October** The Music of Shelley Manne-Matt Skelton, James Davison, Mark Crooks, piano and bass tba; **22nd October** Ted Beament Trio with Alec Dankworth, drums tba.
- **Stock Art Group** Celebrating our 51st Annual Exhibition and Sale of Paintings **Saturday 5th** and **Sunday 6th October** 10am to 5pm at Stock Village Hall CM4 9NF. Entry £1, Children free. Refreshments available, ample parking and wheelchair access.
- **Stock Brook Ladies Probud Group** meets on the **3rd Wednesday of each month** to listen to a speaker and take lunch together at Crondon Park Golf Club. All are welcome. Please contact stockbrookladiesprobud@talktalk.net for more details.
- **APPLE Bridge** Friendly Club meets at Hannakins Farm, Rosebay Avenue on **Wednesday mornings** for duplicate sessions at 9.45. Sessions cost £4 per session. Bring own refreshments. Contact 07552 753075
- **Venturers' Bridge Club** meet on **Thursdays** 1.15pm at Hannakins Farm, Rosebay Avenue for social bridge in a friendly environment. £4.00 per session. Contact graham@forsythe.co.uk

The WI

- **Billericay WI** meet at the WI Hall, St. Edith's Lane at 2pm on the **first and third Wednesday of each month**. Contact 01277 624255.

- **Buttsbury (Billericay) WI** meet on the **2nd Tuesday of the month** at Canon Roche Hall 8pm-10pm. New members welcome. For more details contact Jan Nash on 01277 630147
- **Little Burstead WI** meet on the **second Thursday of the month** from 2pm-4pm at Little Burstead Village Hall. Contact 01268 491396
- **South Green WI** meet on the **third Thursday of the month** at South Green Memorial Hall, Southend Road. CM11 2PR. Contact 01277 652739



Fitness and Sport

- **Billericay parkrun** Every **Saturday** 8.45am at Lake Meadows, parkrun provides a free, timed 5k run, jog or walk for all standards from 4years+ Visit www.parkrun.org.uk/billericay or visit our Facebook page.
- **Lake Meadows junior parkrun** Every **Sunday** at 8.45am at Lake Meadows, parkrun provides a free, timed 2k run, jog or walk for all standards from 4-14 years. Visit www.parkrun.org.uk/lakemeadows-juniors/ or visit our Facebook page: Lake Meadows junior parkrun
- **Billericay Town Walking Football** We train at Billericay Town FC. Men 50+ on **Mondays** 8pm-9.30pm and **Thursdays** 10am-12pm (£6 per session) **Mondays** 7pm-8pm for Ladies 40+ (£5 per session). E-mail Bill at btfcwfr@gmail.com
- **Outwood Common Tenants and Residents** – Seated Yoga **Friday** 11.15-11.45am at St John's Church. £1.50 a session. **First session free**. Open to everyone of all ages and abilities

To advertise your event here, please email resident@bdra.org

Deadline for the next issue is 10th September for events taking place between 10th November and 9th December

Computer Problems?

Don't struggle to carry it up to the shop or put up with expensive call out charges.

Call Gary Mander,
Computer Technician
on 01277 636358
for a no obligation chat

Gary@PCTechnician.co.uk

No Call Out Charge!



HANDYMAN

HOME REPAIRS

GENERAL BUILDING SERVICES

01277 562095

www.mayhomeimprovement.co.uk
info@mayhomeimprovement.co.uk



THE
CHIROPRACTIC CENTRE
BILLERICAY • BRENTWOOD

DO YOU HAVE PAIN?

Call us **TODAY** on
01277 631025



- Low back pain
- Neck pain (including Whiplash)
- Hip and knee osteoarthritis
- Shoulder pain
- "Frozen" shoulder
- Tennis elbow
- Knee pain
- Plantar Fasciitis
- Dizziness (cervicogenic)
- Migraine and headaches



Billericay District Residents' Association COACH TRIPS



**ON THE DAY OF THE TRIP ONLY
THE EMERGENCY CONTACT
NUMBER IS 07518 122647**

Please note that all payments should be made as soon as possible and sent to the person named on the trip advertisement. Cheques should be made payable to BDRA and the trip title shown on the back of the cheque.
Departure points for all trips:

QPR – Queens Park Roundabout (for holiday trip only), GG – Gooseberry Green, bus stop at roundabout, OA – Orchard Avenue, approaching Stock Road, LR – Laindon Road, bus stop between Sun Corner and the fire station, SG – South Green, bus stop to Wickford, opposite the retirement apartments

Please note – When a trip is confirmed the fare must be paid as soon as possible.

If you are a solo traveller on a trip, we ask you to provide a contact number when booking, in case of an emergency on the trip.

TUESDAY 29TH OCTOBER 2024 – ROMFORD DOG STADIUM WITH THREE COURSE LUNCH FULL – PLEASE PAY NOW

Join us today for fun day out at the Romford Dog Stadium. You will enjoy a three course lunch with tea or coffee while you sit and watch the racing and maybe have a flutter. The menu is - Starters - soup of the day, cheese ham and tomato tart or prawn platter. Main Course - pasta Bolognese, slow cooked pork, fish burger, or cauliflower cheese tart. Desert - spotted dick, chocolate fudge cake or mixed ice cream followed by tea or coffee (to be chosen on the day).

Cost: Includes coach, entry and lunch £31.50.

Depart: GG 11.30am. OA 11.35am. LR 11.45am. SG 11.50am. Back in Billericay approximately 6.00pm.

Kathleen Fox, 72 Perry Street, Billericay, Essex CM12 0ND. Telephone 01277 622342

THURSDAY 21ST NOVEMBER 2024 – ELY CATHEDRAL CHRISTMAS GIFT AND FOOD FAIR FULL – PLEASE PAY NOW

FRIDAY 22ND NOVEMBER SECOND COACH RUNNING – PLEASE RING AS SOON AS POSSIBLE IF INTERESTED

This hugely successful Christmas gift and food fair is one of East Anglia's exceptional shopping experiences. Over 150 stalls will be exhibiting this year in the cathedral along with the festive food hall, offering its usual array of edible delights. Throughout the event you can enjoy regular floral presentations and seasonal cookery demonstrations. Musical entertainment will be provided by the cathedral choristers. Food and drink is available to purchase in the heated Cafe Marquee. You might like to visit Oliver Cromwell's house cost £7.50.

Cost: £25.00 which includes coach and entry to the cathedral fair.

Depart: GG 8.30am. OA 8.35am. LR 8.45am. SG 8.50am. Back in Billericay approximately 6.00pm.

Kathleen Fox, 72 Perry Street, Billericay, Essex CM12 0ND. Telephone 01277 622342

WEDNESDAY 18TH DECEMBER 2024 – JACK AND THE BEANSTALK AT THE CLIFFS PAVILION STARRING RYLAN – EVENING PERFORMANCE

LAST CHANCE SEATS AVAILABLE – BOOK YOUR TICKETS NOW OTHERWISE THE TRIP WILL BE CANCELLED

Doomed to sell his trusty cow, join Jack and his family as they fight to outwit the evil giant, win richest beyond his wildest dreams and the hand of the girl he loves. We have secured raised back stalls seats, so book your ticket and expect laughs, music, special effects, magic beans & bundles of audience participation in this giant of a performance.

Cost: Coach and Theatre Ticket £53.00.

Depart: GG 4.45pm. OA 4.50pm. LR 4.55pm SG 5.00pm. Back in Billericay approximately 10.00pm.

**DO NOT MISS OUT
ON AN EVENING
OF FUN AT
THE PANTO
BOOK NOW OR WE
WILL CANCEL!
"Oh no you won't"
"Oh yes we will!"**

Please telephone to book after 9.00am

Yvonne Cave, 11 The Vale, Stock, Ingatestone, Essex CM4 9PW. Telephone 01277 840560

THURSDAY 20TH FEBRUARY 2025 – BROOKLANDS AVIATION AND MOTORING MUSEUM, GUIDED TOUR INCLUDED SEATS AVAILABLE

Brooklands welcome us to the birthplace of British motor racing, a powerhouse of British engineering. Discover the speed, glamour & endeavour that made Brooklands a household name for much of the Twentieth Century. Enjoy the interactive experiences & explore the worlds most extraordinary collection of historic cars, classic racing cars, buses, vintage aircraft & the iconic Concorde. See inside the award-winning Aircraft Factory, at the world's first purpose-built racetrack. Walk in the footsteps of the motor sport & aviation legends that shaped & changed the world forever right here at Brooklands. Brooklands also offer a Concorde Experience, to see inside the world's most famous aircraft. Re-live the excitement of the supersonic age on this 25 minute tour.

The Concorde tour cost is £6.50 and is not included in our price, but can be booked, please let me know when booking.

Cost: £43.00 Coach, Entrance & Brooklands 360 1 hour tour.

Depart: GG 8.15am. OA 8.20am. LR 8.25am. SG 8.30am.

Yvonne Cave, 11 The Vale, Stock, Ingatestone, Essex CM4 9PW. Telephone 01277 840560

★ HOLIDAY ★ HOLIDAY ★ HOLIDAY ★ HOWDEN COURT HOTEL TORQUAY – SATURDAY 15TH MARCH - FRIDAY 21ST MARCH 2025

This family hotel is situated a ten minute walk to the shops. The hotel's private path takes you to the harbour and seafront in seven minutes. It has a separate dining room bar and lounge. All bedrooms have tea and coffee making facilities, TV, and hair driers. There is a lift, ground floor bedrooms with wet rooms and Wi fi in all communal areas and most bedrooms.

This hotel has 510 five star reviews on Trip Advisor

Included:

- 9 single rooms available without a supplement (only one room per person per booking)
- Full English breakfast and three course evening meal with tea or coffee, with waitress service.
- 3 day excursions (to be arranged)
- Evening entertainment Monday, Tuesday, Thursday, Friday, a theatre trip can be organised for Wednesday evening.

Cost: £499.00 deposit £50.00. Balance to be paid mid January.

Pick up and departure times to be arranged.

Please telephone to book as soon as possible

Kathleen Fox, 72 Perry Street, Billericay, Essex CM12 0ND. Telephone 01277 622342

**If concession prices are quoted (i.e. seniors, children) these should be requested at the time of booking or the full price will apply.
In the event that you need to cancel all efforts will be made to resell your tickets, however if we are unable to resell your tickets you are liable for payment.**

PRIVACY NOTICE We understand that you consented to BDRA holding personal details about you when you subscribed as a member of the Billericay District residents' Association and a recipient of the Resident magazine. The information which we hold is your name and address, and we may hold additional information which you have provided such as your email address and/or telephone number. We hold this data for the purpose of delivering the Resident Magazine to you and to collect and administer your subscription payments. We will hold your personal information only for as long as is necessary for these purposes. Personal data is held securely and will not be shared with any third parties. You have the right to request to see what information we hold about you. You have the right to instruct us to delete your personal information from our records at any time. This would result in the termination of your membership of the BDRA.